

Light efficiency:

39 Lumen/Watt

Light quality:

CRI: 85.3

Color temperature:

2849 K

Output: 81.1 lm

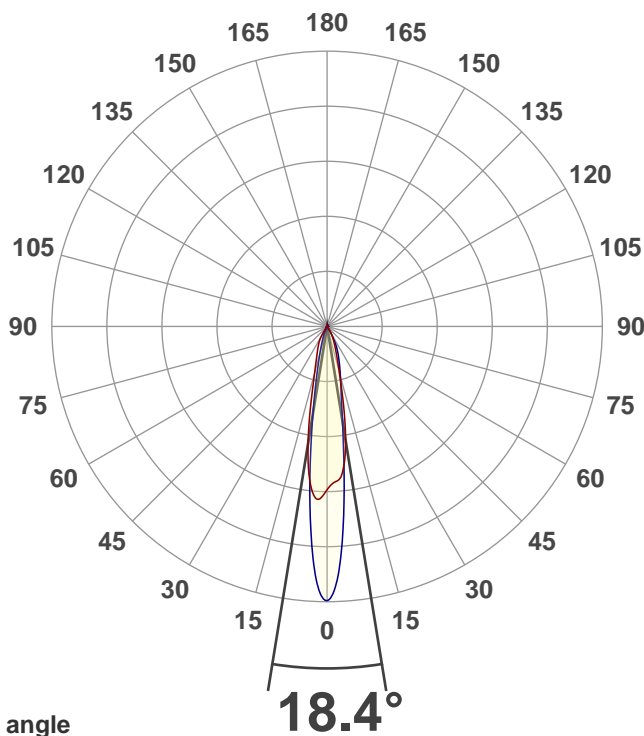
Peak: 592 cd

Power: 2.1 W

3.00V @ 0.700A

2 PLANES

No photo

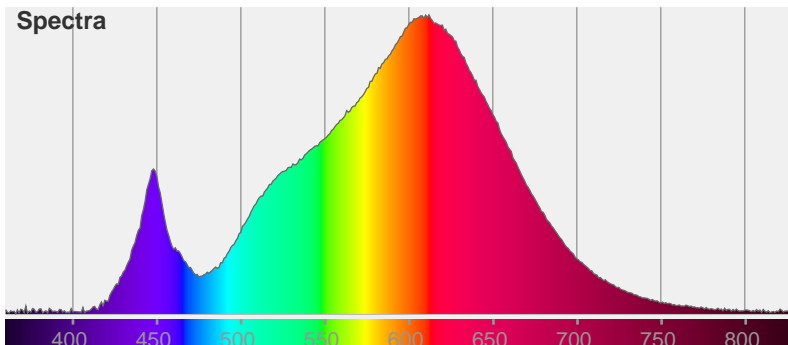


Beam angle

Color

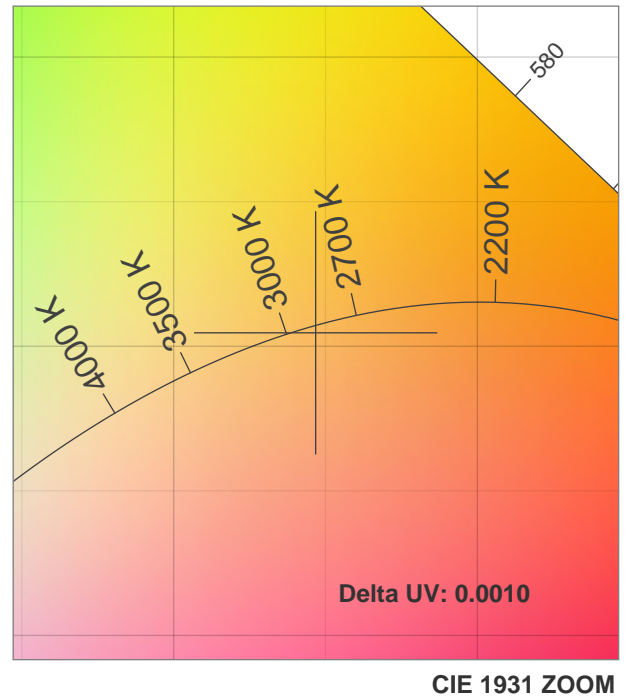
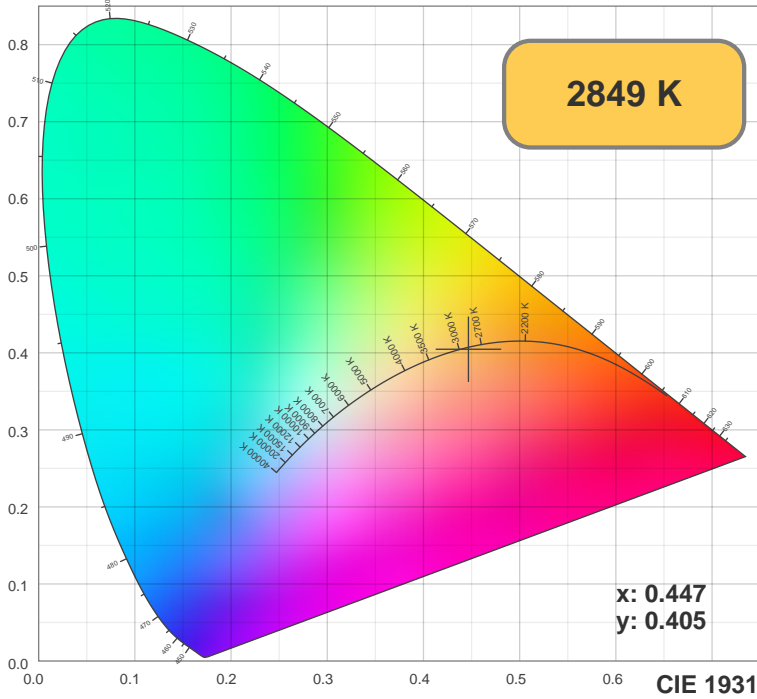
CIE1931
x: 0.447
y: 0.405

Spectra

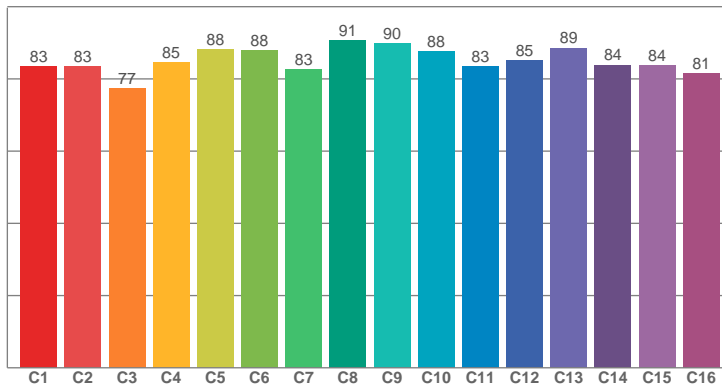


Colormetrics

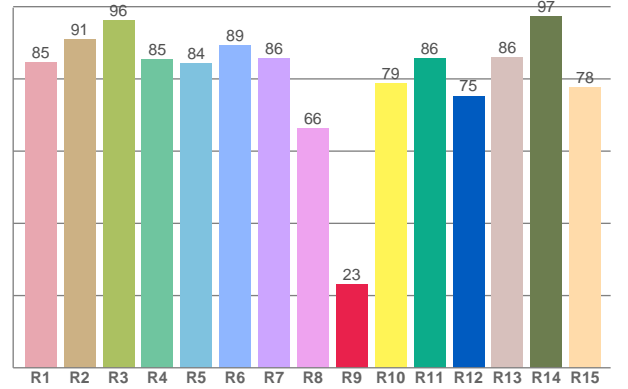
2 of 3



TM30: 85.0



CRI: 85.3 (R1-R8)



CRI R values, only R1-R8 are used to calculate final CRI value

R1	R2	R3	R4	R5	R6	R7	R8	R9	R10	R11	R12	R13	R14	R15
84.62	90.96	96.13	85.38	84.19	89.18	85.77	66.19	23.11	78.77	85.69	75.25	86.00	97.38	77.70

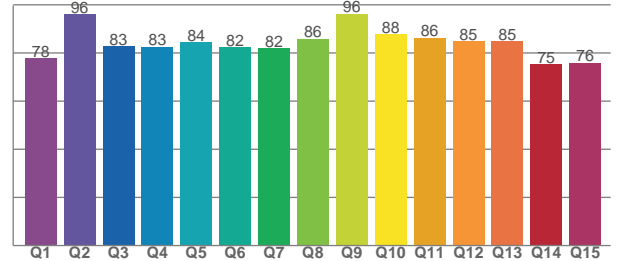
TM30 C values, 16 binned values out of total of 99 C values

C1	C2	C3	C4	C5	C6	C7	C8	C9	C10	C11	C12	C13	C14	C15	C16
83.37	83.44	77.31	84.64	88.15	87.90	82.61	90.66	89.73	87.61	83.42	85.14	88.57	83.87	83.79	81.49

CQS Q values

Q1	Q2	Q3	Q4	Q5	Q6	Q7	Q8	Q9	Q10	Q11	Q12	Q13	Q14	Q15
77.78	96.15	82.70	82.60	84.40	82.37	82.12	85.98	96.31	87.98	86.36	85.03	85.02	75.47	75.99

CQS: 83.2

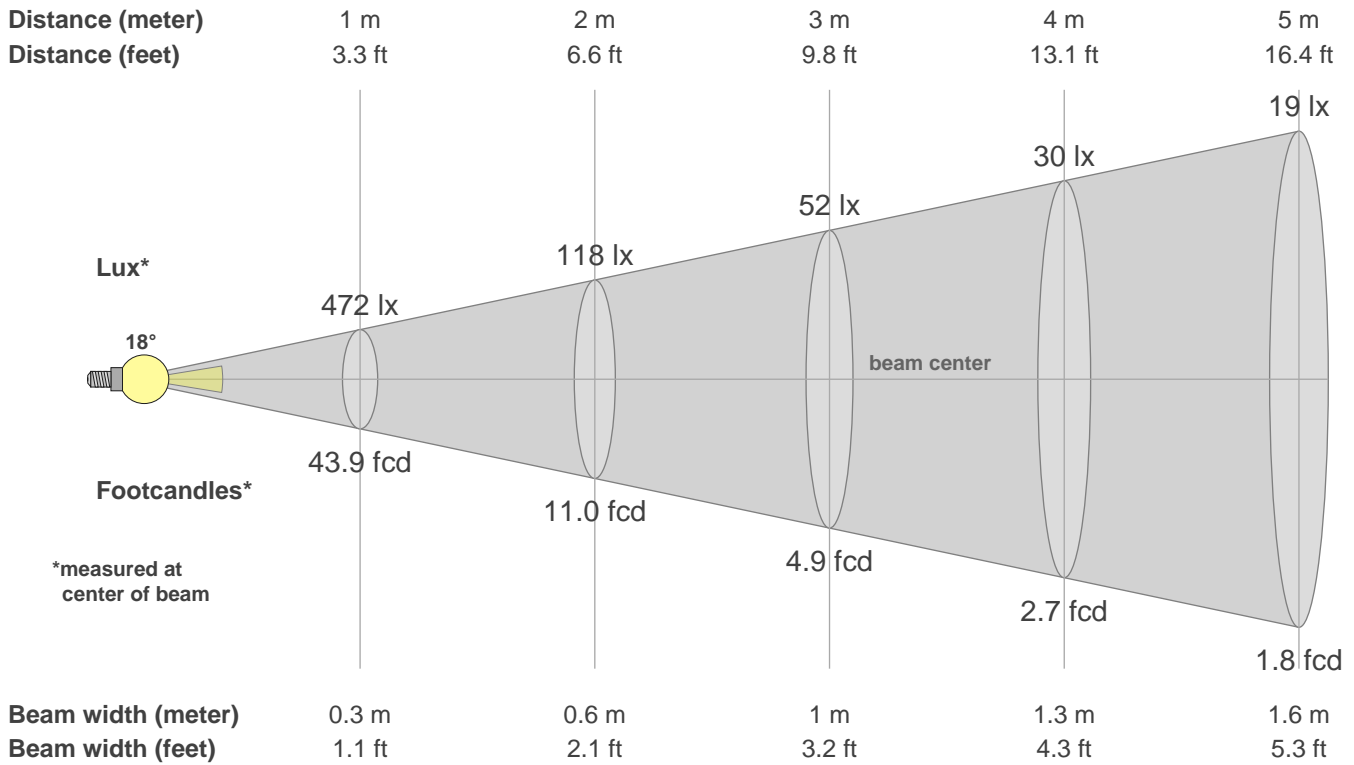


Color parameters

CCT	CRI	CRI R9	TM30 Rf	TM30 Rg	CQS	x	y	u	v	Duv
2849 K	85.3	23.1	85.0	100.0	83.2	0.4	0.4	0.3	0.3	-0.0010

Beam details

3 of 3



Intensities in 0° c-plane

0°	2°	4°	6°	8°	10°	12°	14°	16°	18°	20°	22°	24°	26°	28°	30°	32°	34°	36°	38°
472	340	334	317	280	227	169	119	88	68	55	44	36	29	24	19	13	8	5	3
100%	72%	71%	67%	59%	48%	36%	25%	19%	14%	12%	9%	8%	6%	5%	4%	3%	2%	1%	1%

Intensities in 90° c-plane

0°	2°	4°	6°	8°	10°	12°	14°	16°	18°	20°	22°	24°	26°	28°	30°	32°	34°	36°	38°
472	556	467	354	253	186	146	121	102	87	74	63	52	39	23	12	7	4	3	2
100%	118%	99%	75%	54%	39%	31%	26%	22%	18%	16%	13%	11%	8%	5%	3%	1%	1%	1%	1%

Intensities in 180° c-plane

0°	2°	4°	6°	8°	10°	12°	14°	16°	18°	20°	22°	24°	26°	28°	30°	32°	34°	36°	38°
472	370	370	343	294	231	168	120	93	76	64	55	47	41	35	27	17	9	5	3
100%	78%	78%	73%	62%	49%	35%	26%	20%	16%	13%	12%	10%	9%	7%	6%	4%	2%	1%	1%

Intensities in 270° c-plane

0°	2°	4°	6°	8°	10°	12°	14°	16°	18°	20°	22°	24°	26°	28°	30°	32°	34°	36°	38°
472	562	473	358	246	163	107	72	50	35	25	17	12	7	5	4	3	2	2	2
100%	119%	100%	76%	52%	34%	23%	15%	11%	7%	5%	4%	2%	2%	1%	1%	1%	0%	0%	0%

Beam angle 50%	Field angle 10%	Cutoff angle 2.5%	Intensity ratio in 120° cone	Intensity ratio in 90° cone
18.4°	44.2°	59.7°	96.4%	94.8%