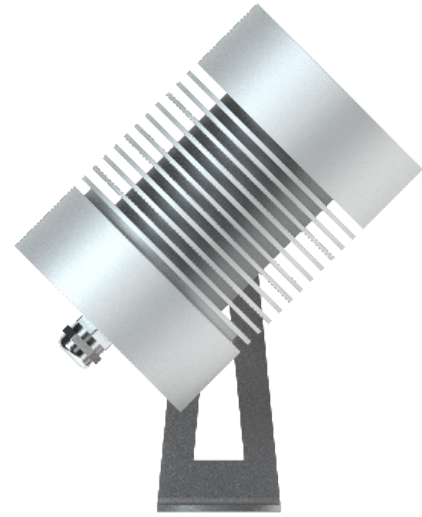


P100

PROJECTORS

ewo

T +39 0471 62 30 87
mail@ewo.com
ewo.com



Materials

Projector housing in aluminum, silver anodized, mounting bracket in stainless steel satin finish, cover made of tempered safety glass, screw joints in stainless steel, silicone gasket, cable connection in nickel-plated brass.

Lighting technology

4 high-performance LEDs, metal core circuit board, precision lenses made of PMMA, internal driver, incl. 1–5 m connection cable with water stop.

Application area

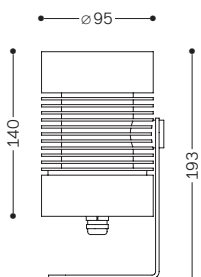
Architectural floodlighting, object and effect lighting, floor mounting, wall mounting and ceiling mounting.

Power 290 lm, 5.0 W, 350 mA
740 lm, 9.5 W, 700 mA

Beam angle spot optics 10°
26°
50°
8–40°

Weight 1.9 kg

Accessories Connection cable
Electrical connection



Colour temperature

More colour rendering indexes upon request

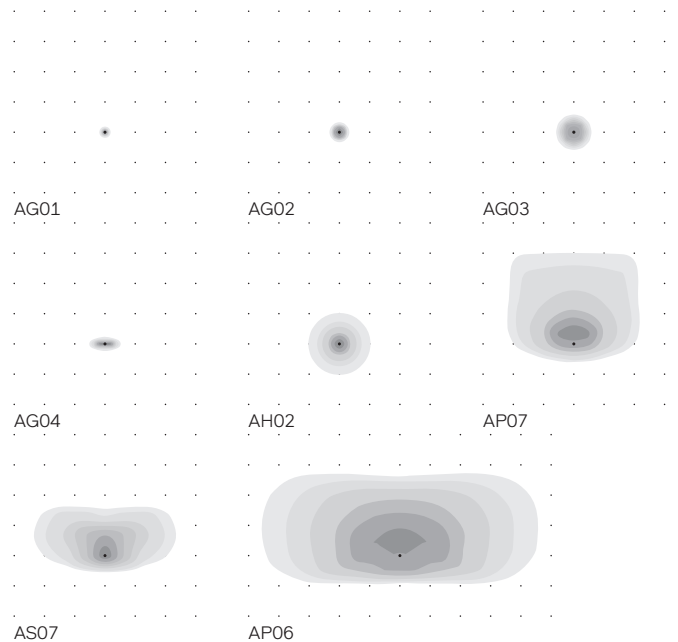


Warm white → 3.000 K
CRI ≥ 80



Neutral white → 4.000 K
CRI ≥ 80

Light distributions



Version 2.3