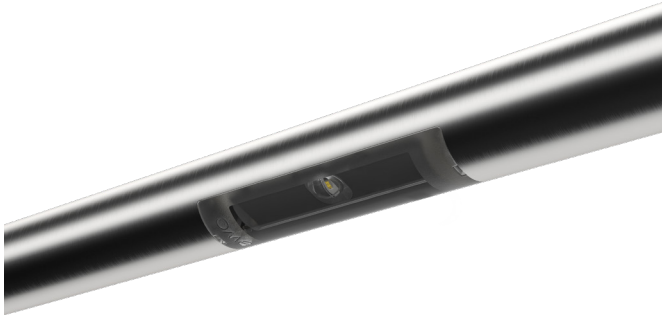


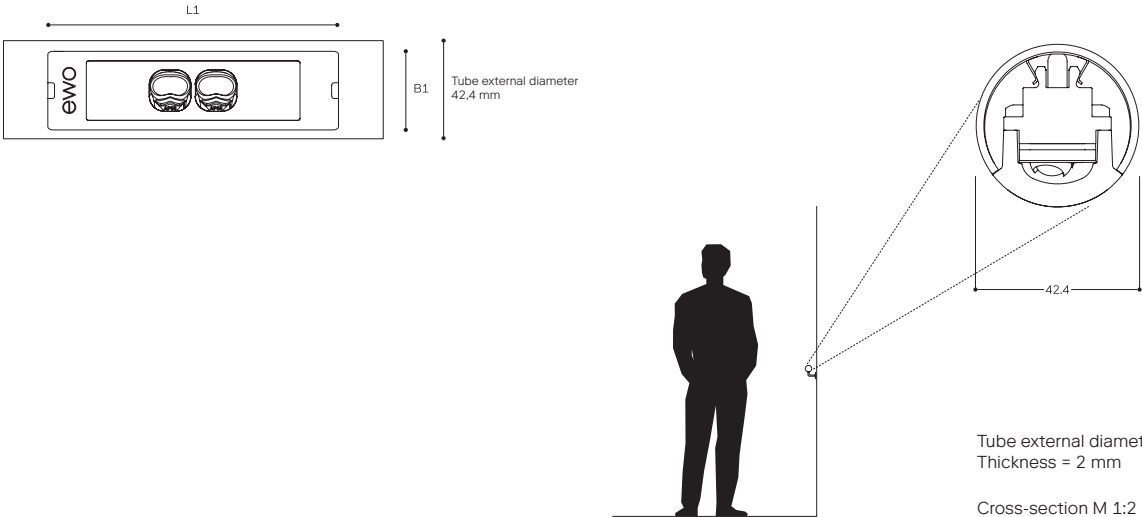


IDstandard 1 LED



IDstandard 1 LED mounted in the tube

Dimension



- 1 Housing accommodates 2 LED (LED Board: 1 / 2 / LED)
- 2 Current feed: 200 mA–500 mA, depending on ambient temperature
- 3 Electronic operating device with DALI interface, 1–10 V or stand-alone programming, external driver
- 4 Various light distributions for stairs or walkway lighting
- 5 AP06, AP07, AS07
- 6 Lens made from PMMA, with aluminum support plate
- 7 Housing made from aluminum, cover in PMMA
- 8 Finish: silver anodized



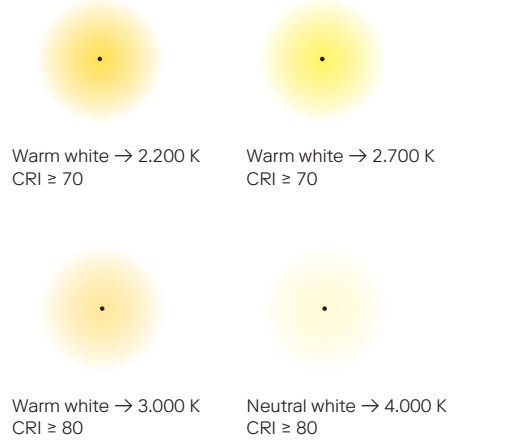
Protection class III (<18Led)

Models / Equipment Variations

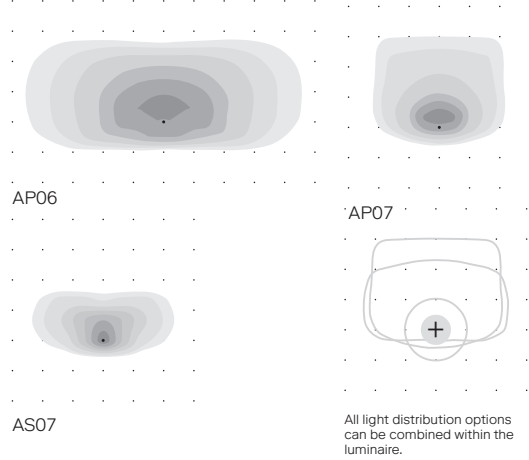


IDstandard
 1–2 LED

11 Colour temperature More colour rendering indexes upon request



12 Light distributions



Model	L1 [mm]	B1 [mm]	LED	Luminous flux [lm]②	Power [W]③
IDstandard 1 106		34	1	40–110	0.6–1.5
IDstandard 2 126		34	2	80–230	1.2–3.0