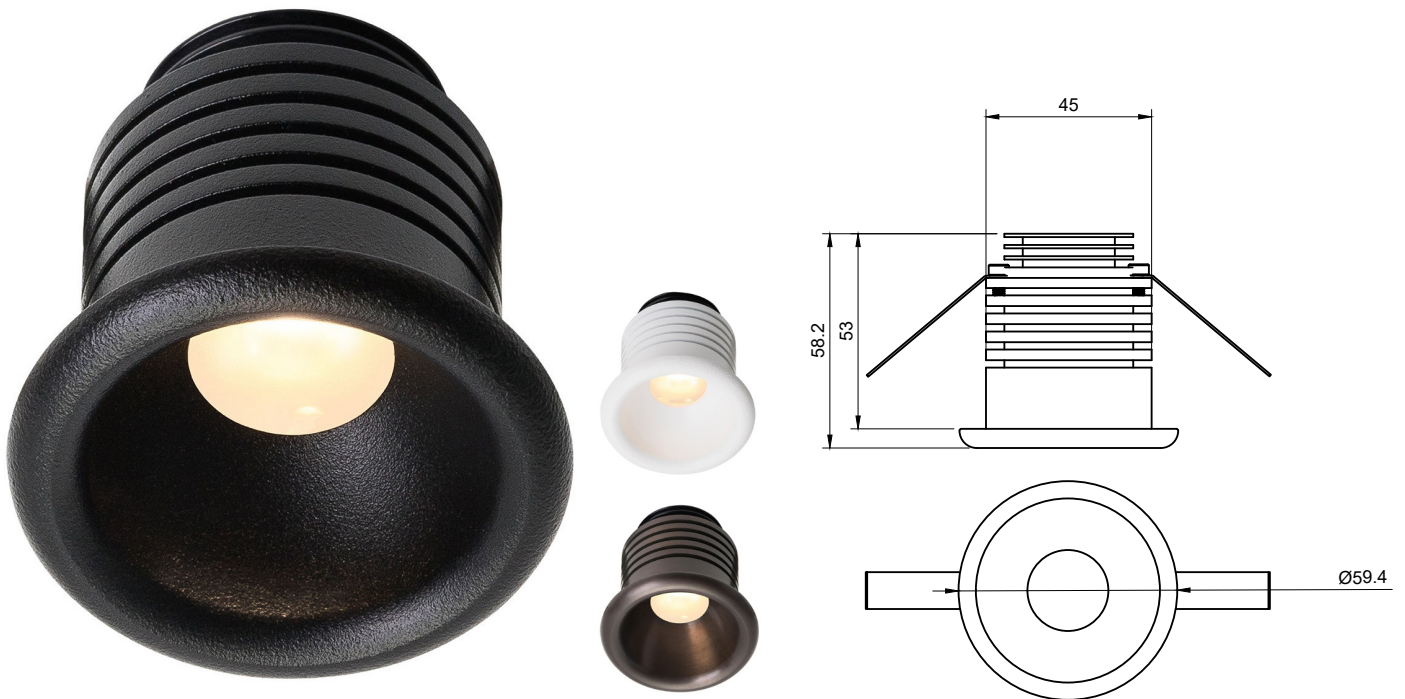


Description:

Recessed downlight, 4W or 6W CREE XLamp XHP-50 Gen 2, IP44 rated. Various colour temperatures and finishes available. Machined brass fitted with Cable gland, pre-fitted 500mm exterior rated power cable.



Technical:

LED TYPE	CREE XLamp XHP-50 Gen 2	CONTROL GEAR	REMOTE
RATED POWER	4W - 6W	DIMMING PROTOCOL	DALI - 0-10V - PHASE DIM - ON/OFF
CRI	80	CABLE LENGTH	500MM STANDARD LENGTH
BEAM ANGLES	NOMINATED IN TABLE BELOW	MOUNTING OPTIONS	RECESSED - SURFACE WALL / CEILING
INPUT POWER / FORWARD VOLTAGE	350mA - 700mA / 6V	WEIGHT	0.2KG
NOMINAL LUMENS	300lm - 476lm	HARDWARE	GLASS LENS, O-RING, GLAND, CABLE
IP RATING	IP44	CONSTRUCTION	MACHINED METAL & HEATSINK
COLOUR TEMPERATURE	2700K - 3000K - 4000K	WARRANTY	2 YEARS

Product Generator: example 1629-PB-M-30-R-4W-DALI-HC

Model	Finish	Beam Angle	CCT	Mounting	Wattage	Dimming	Accessory
NL1629	AB Aged Brass	N Narrow 25°	27 2700K	R Recessed	4W / 350mA	DALI	HC Honeycomb Louvre
	NB Natural Brass	M Medium 30°	30 3000K	W Wall Mounted	6W / 700mA	0-10V	
	SS Stainless Steel	W Wide 47°	40 4000K	SM Surface Mount		PHASE	
	PB Black			F Floor		ON/OFF	
	PW White						

NL1629	-	-	-	-	-	-	-
--------	---	---	---	---	---	---	---